



# Orthodontics

Cutter

Orthodontic Pliers

Wire Cutter

Ligature Instrument

Bonding Instrument

Orthodontic Articulator

Measuring Device

Torch

Locking Tweezers / Chin Cap

Impression Tray



# EVER Classic

Traditional  
and  
Classical Design.

# EVER Fine

Fine Tips  
and  
Supple Curved Handle.



Ever with  
LY  
You...





# Distal End Cutter **EVER** Fine

# Pin & Ligature Cutter **EVER**

\*Cut and hold distal end of arch wire.  
\*Cemented carbide inserts provide high performance and long life of the tips.

\*Cut excess ligature wire.  
\*Hard material inserts ensure cutting of ligature wire and elastic.



Size / 124mm

**606S T/C**  
**No.27606**

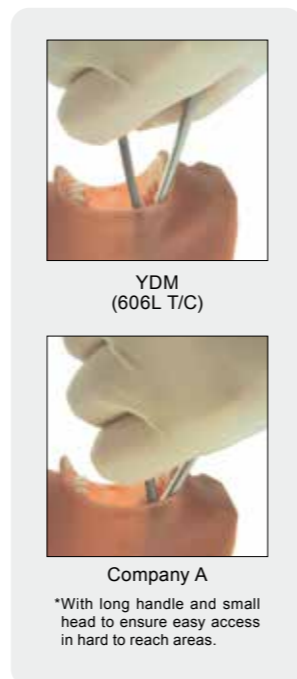
\*Cut up to   
● Round wire .012"- .020"  
■ Rect. wire .016"x.016"- .022"x.028"



Size / 147mm

**606L T/C**  
**No.27607**

\*Cut up to   
● Round wire .012"- .020"  
■ Rect. wire .016"x.016"- .022"x.028"



YDM  
(606L T/C)



Company A

\*With long handle and small head to ensure easy access in hard to reach areas.



**Classic**

**615**  
**with Hard Material**  
**No.27615**

\*Cut up to .014" (ø0.35mm)



**Fine**

**605**  
**with Hard Material**  
**No.27605**

\*Cut up to .012" (ø0.30mm)

### Fine

\*To avoid breakage, insert hard material on the tip.

\*Fine curved shape provide performance to cut ligature wire on crowded area, dislocated area easily.



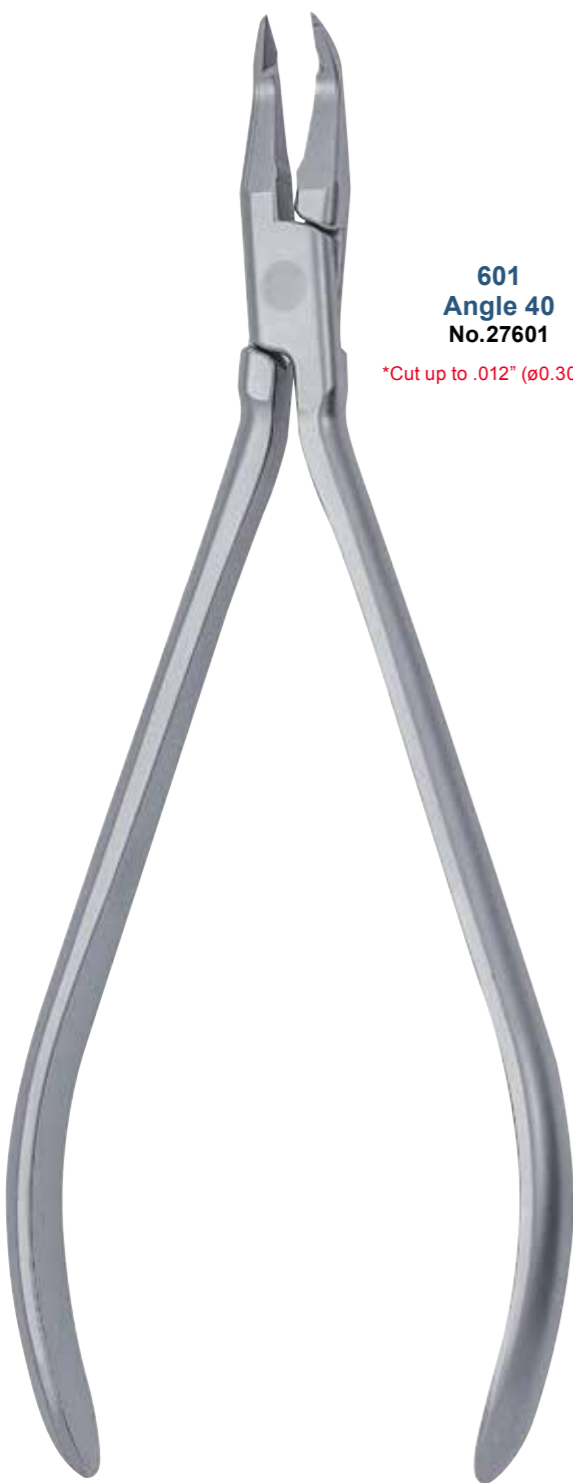
\*10° angle and fine curve allow easy to access both premolars and molars.



**Pin & Ligature Cutter** **EVER**Fine



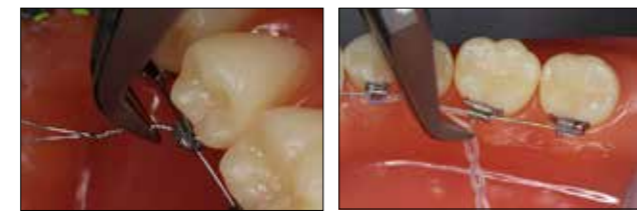
\*Cut excess ligature wire.  
\*Hard material inserts ensure cutting of ligature wire and elastic.



**601**  
**Angle 40**  
**No.27601**  
\*Cut up to .012" (ø0.30mm)



**602**  
**Reverse 40**  
**No.27602**  
\*Cut up to .012" (ø0.30mm)



**603**  
**Angle 50**  
**No.27603**  
\*Cut up to .012" (ø0.30mm)



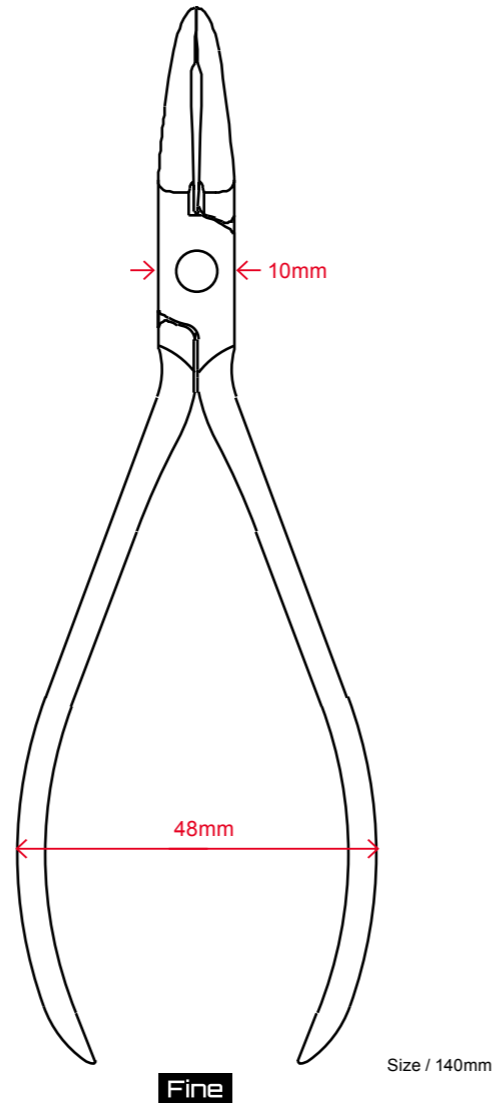
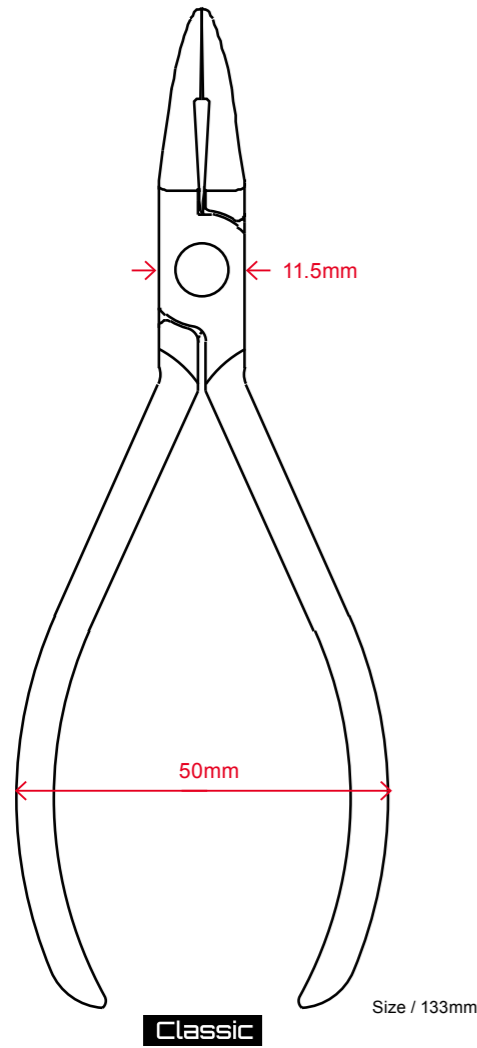
**604**  
**Reverse 50**  
**No.27604**  
\*Cut up to .012" (ø0.30mm)



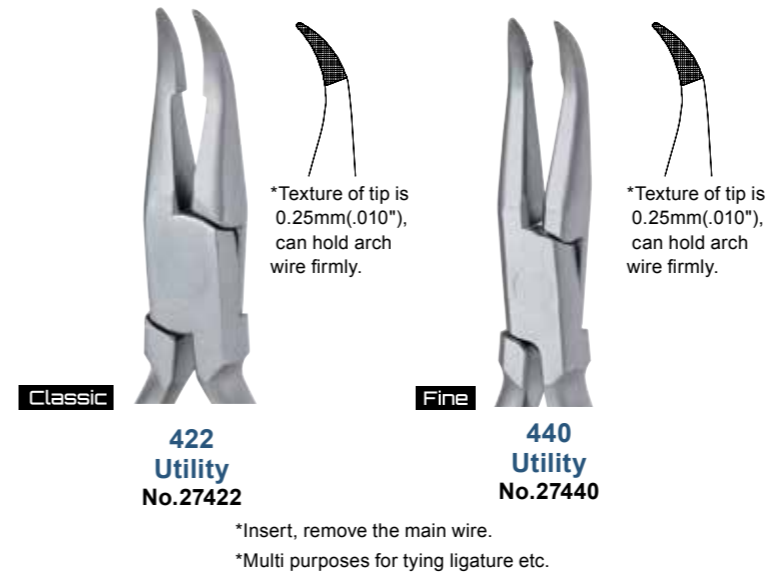
\*Comparison of, Straight Type and Angled Type.



**Classic** Traditional and classical design fascinate artistic mind.  
**Fine** Supple curved handle narrow box joint fascinate new generations.



## -Utility Pliers-



\*Tips Pictures of 422 / 440 / 462.

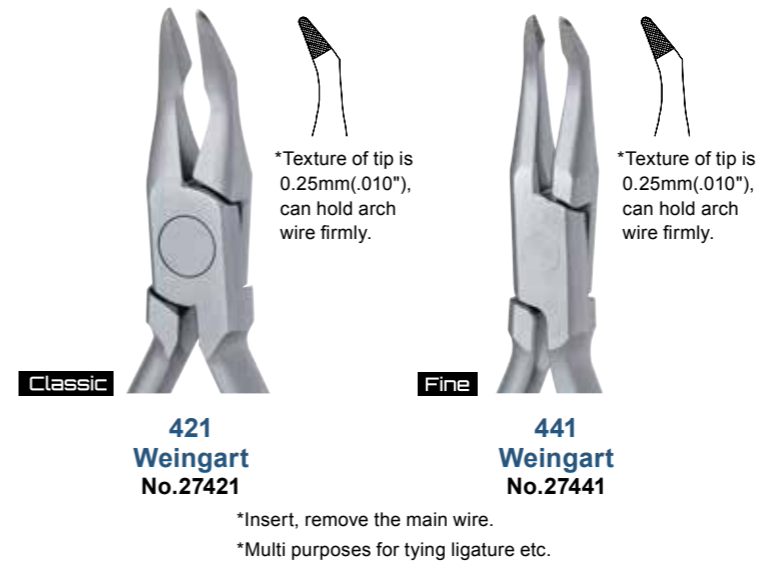


**462**  
**Lingual Utility**  
 No.27462



\*Comfortable Long handle with precise tip for both Lingual and Labial treatment.

## -Utility Pliers-



**-Bending Pliers-**

**Classic**

**415**  
**Tweed Arch**  
No.27415

1.3mm

**Fine**

**455**  
**Tweed Arch**  
No.27455

1.0mm

\*Maximum wire capacity .022"x.028"  
\*Hold arch wire, apply torq, offset-bend, inset-bend.

**Classic**

**417**  
**Three Jaw**  
No.27417

**Fine**

**457**  
**Three Jaw**  
No.27457

\*Maximum wire capacity .036"  
\*Quad Helix, lingual arch, activate of main wire.

**Classic**

**418**  
**Bird Beak**  
No.27418

**Fine**

**458**  
**Bird Beak**  
No.27458

\*Maximum wire capacity .036"  
\*Bend retainer wire, clasp.

**Classic**

**414**  
**Young**  
No.27414

**Fine**

**454**  
**Young**  
No.27454

\*Maximum wire capacity .040"  
\*Bend retainer wire, adjust inner bow with three steps. (1.4mm, 3.0mm, 4.5mm in diameter)

**Classic**

**416**  
**Tweed Loop Forming**  
No.27416

**Fine**

**456**  
**Tweed Loop Forming**  
No.27456

\*Maximum wire capacity .022"x.028"  
\*Round beak is shaped 3 layers of cylinders (1.25mm, 1.85mm, 2.26mm in diameter) can be used for closing helical loop, helical loop, omega loop.

\*Traditional and classical design fascinate artistic mind.  
\*Matte surface can avoid reflection of pliers under bright light.

**-Bending Pliers-**

**Classic**

**419**  
**Nance Closing Loop**  
No.27419

**Fine**

**459**  
**Nance Closing Loop**  
No.27459

\*Maximum wire capacity .022"  
\* With using each step (3.5mm,4.5mm,5.5mm,6.5mm), make the same height in parallel for loops such as MEAW or Keyhole.

**Classic**

**423**  
**Kim T/C (with Cutter)**  
No.27423

With Cemented Carbide insert

**Fine**

**453**  
**Kim T/C (with Cutter)**  
No.27453

With Cemented Carbide insert

\*Maximum wire capacity .016"x.022"  
\*Cut up to .020"  
\*Bend MEAW loop.

**Classic**

**424**  
**Light Wire T/C (with Cutter)**  
No.27424

With Cemented Carbide insert

**Fine**

**452**  
**Light Wire T/C (with Cutter)**  
No.27452

With Cemented Carbide insert

\*Maximum wire capacity .020"  
\*Cut up to .020"  
\*Designed for circle hook, tear drop.

**Classic**

**426**  
**Lingual Hollow Chop**  
No.27426

\*\*"Utility" Hollow Chop Pliers are not only for Lingual but also Labial treatment.

[ Lingual Hollow Chop ]

\*Excellent performance not only for mushroom arch with posterior teeth of lingual wire but also for the narrow curve with β-Ti type material of lingual straight.

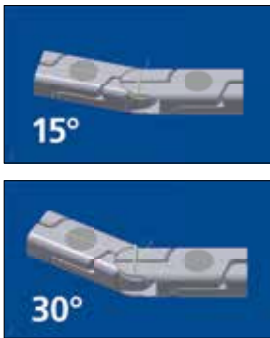
\*Suitable for bending lingual arch and similar materials requiring delicate bending.

YDM      Other Company

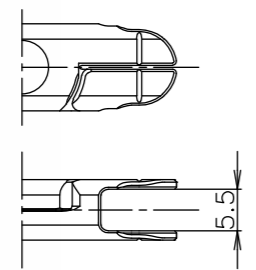
\*Comparison with conventional product.

**-Bending Pliers-**

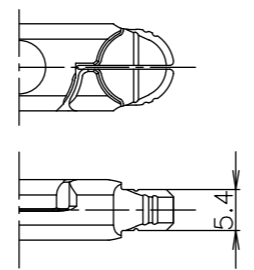
\*Apply the torque to arch wire with this combination of #27427 and #27428.  
 \*15° and 30° lines for "M" and "F" make your bending smooth and easier.



**428**  
Torquing F  
No.27428  
Classic



**427**  
Torquing M  
No.27427  
Classic



**-Bending Pliers-**

\*YDM unique and efficient design of "Step" and "Cinch Back" Pliers.

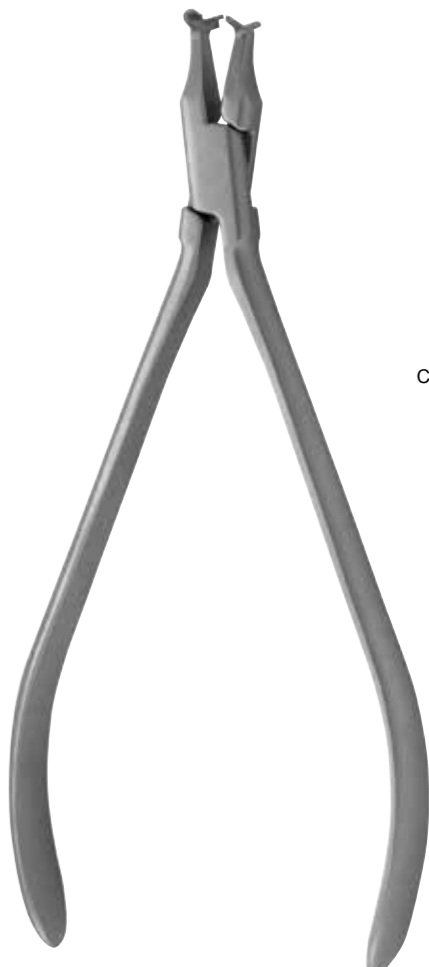
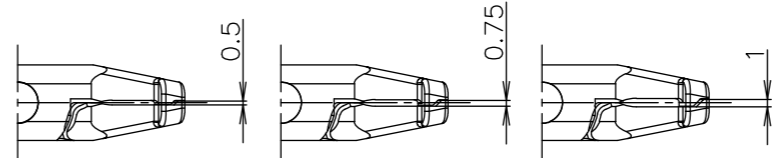


**445**  
Step 1/2mm  
No.27445  
Fine



**446**  
Step 3/4mm  
No.27446  
Fine

**447**  
Step 1mm  
No.27447  
Fine



**461**  
Cinch Back  
No.27461  
Fine

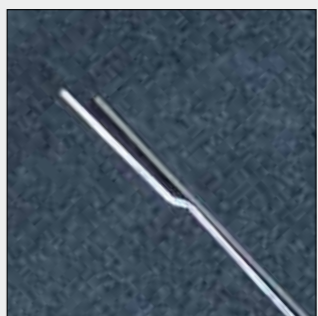
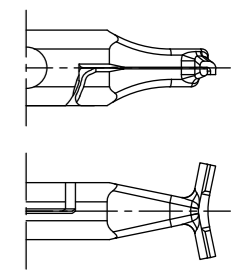


YDM (461)



Conventional Type

\*Maximum wire capacity /  
Round Wire .020"  
Rect Wire .016"x.016"



\*Small head with unique design for "beautiful parallel step".  
 \*3 types, 1mm, 0.75mm and 0.5mm, available.



\*Stylish hammer head for bending both "up and down with beautiful angle".  
 \*Up to .020 for easy and smart bending just by this one pliers.

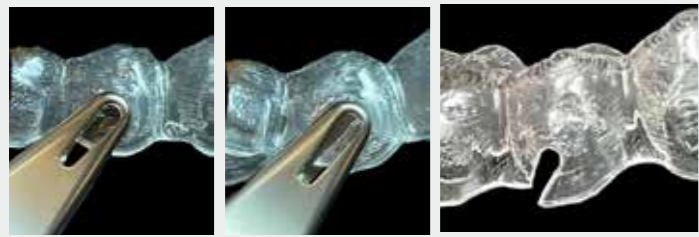


**-Aligner Pliers-**

- \*With fine tips to ensure to insert into lingual or narrow part, crowded teeth.
- \*With long handle to ensure to insert into lingual or narrow part, crowded teeth.
- \*Matte surface can avoid reflection of pliers under bright light.
- \*Supple curved handle fits female dentists.



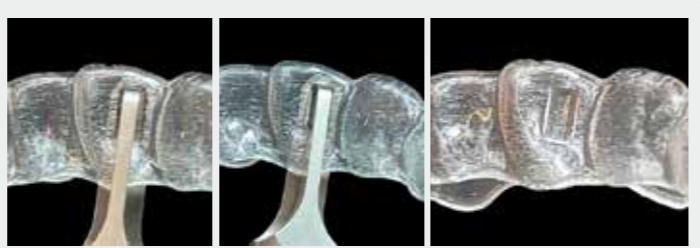
**448**  
**Tear Drop**  
No.27448



\*For making a slit to apply elastic with aligner. Excellently sharp cutting so it doesn't make rough surface, which avoid cutting of elastic.



**449**  
**Vertical**  
No.27449



\*For making a vertical hollow to apply torque to mesial or distal part of lingual or buccal side of aligner. Thin and slim shape of tip is designed for easy approach even to narrow incisal margin part, especially lower anterior.



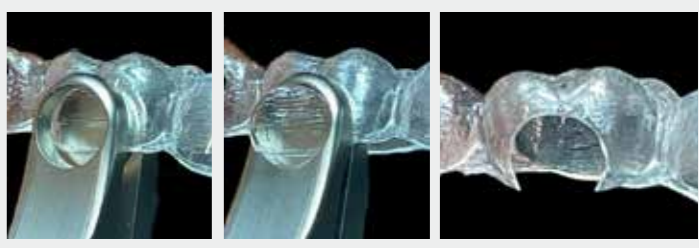
**450**  
**Horizontal**  
No.27450



\*For making a horizontal hollow to apply rotation to lingual or buccal side of aligner. Thin and slim shape of tip is designed for easy approach even to narrow incisal margin part, especially lower anterior.



**451**  
**Hole Punch**  
No.27451



\*For making a hole to apply lingual button with aligner. Excellently sharp cutting so it doesn't make rough surface after making a hole. Slim shape of tip is designed for easy approach to the narrow space such as molar part which has low height.



**463**  
**Round Former 1.0**  
No.27463



\*For making 1.0mm circle hollow to narrow part of aligner such as lower anterior to apply rotation or torque. Also for making additional hollow to the hollow applied by Vertical or Horizontal pliers for more rotation or torque.



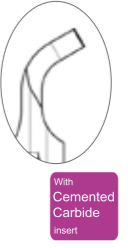
**464**  
**Round Former 2.0 SM**  
No.27464



\*For making "2.0mm" circle hollow to narrow part of aligner such as lower anterior to apply rotation or torque. Also for making additional hollow to the hollow applied by Vertical or Horizontal pliers for more rotation or torque.



**444**  
**Bracket Removing**  
No.27444



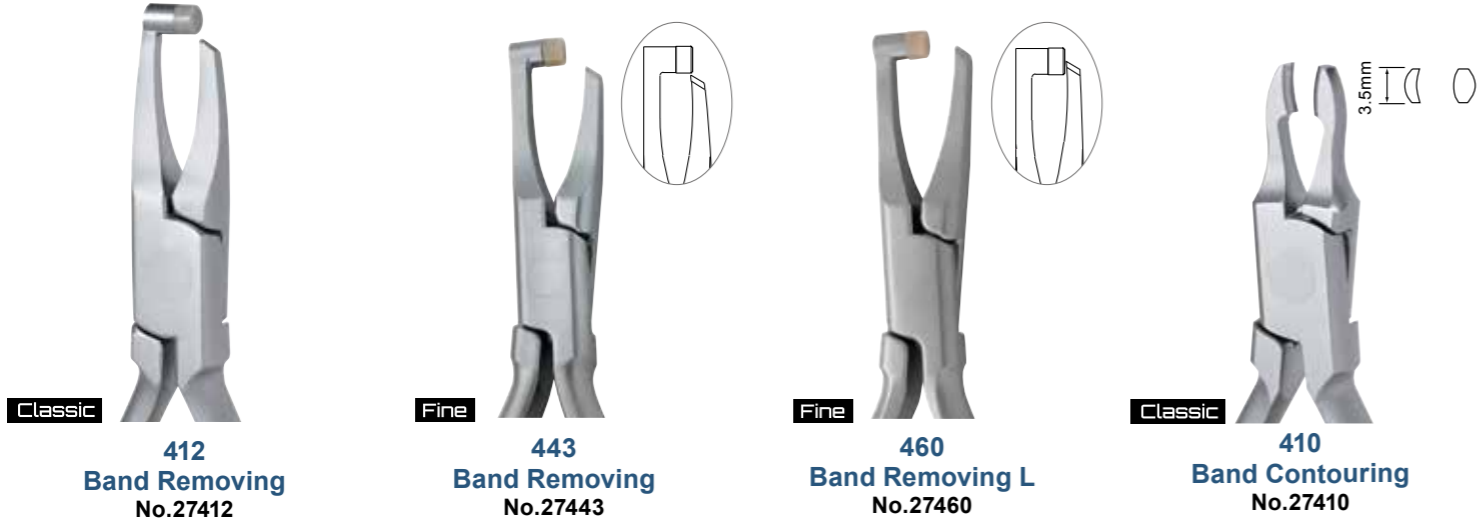
With Cemented Carbide insert

\*For removing "attachment" of aligner efficiently.  
\*Please use bur in case attachment remained a little after using this pliers.





**-Banding Pliers-**

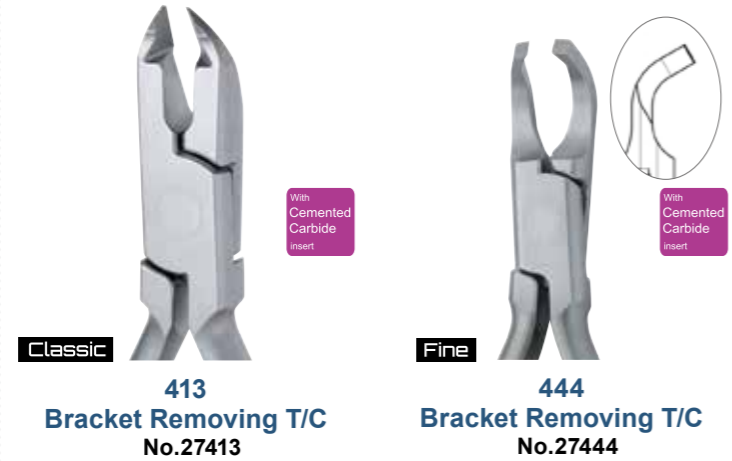


\*Longer tip than 412,443.

**-Banding Pliers-**



**-Debonding Pliers-**



**-Crimping Pliers-**



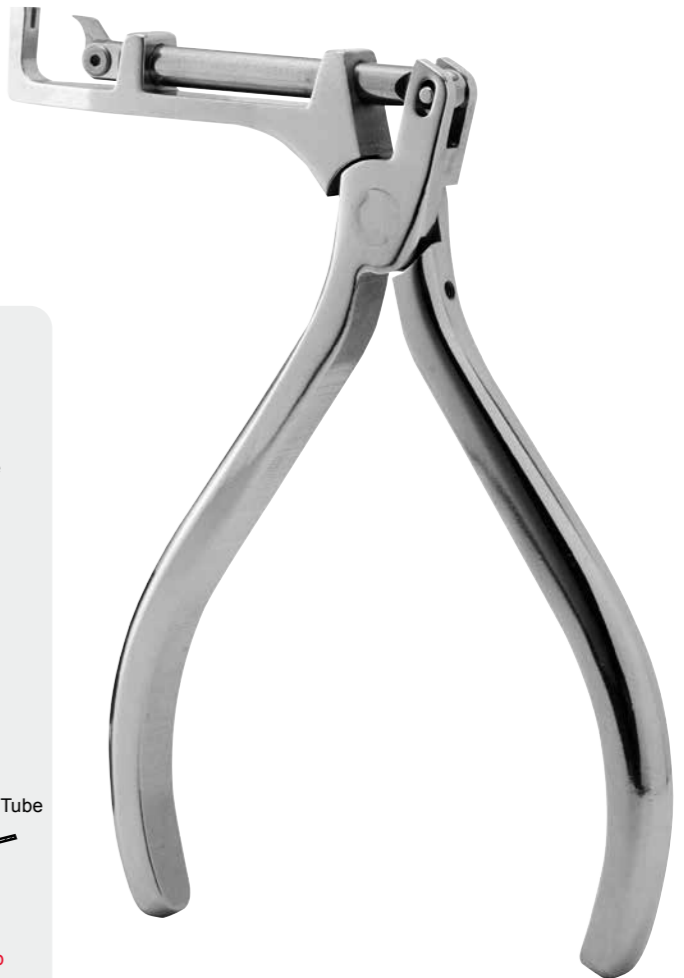
Universal T/C No.22001



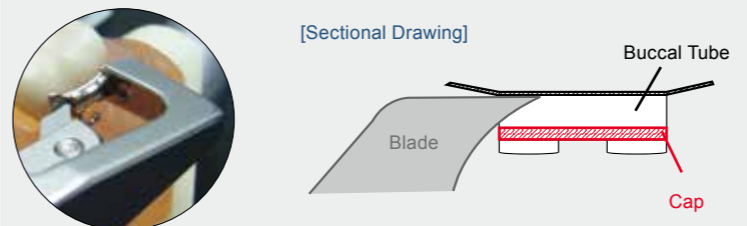
Convertible Cap Removing Pliers



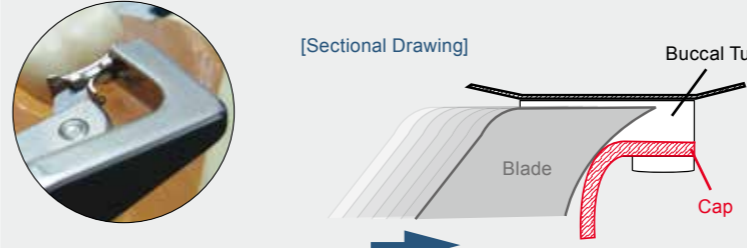
ND-934 No.27934



1) Insert the blade edge parallel to cap from mesial side of buccal tube slot.



2) By gripping the handle, Move the blade to distal side and remove the cap easily.



\*Please remove the fallen cap from a mouth.

# Wire Cutter



\*Cut retainer wire, clasp wire.



**YS-601**  
No.22601

\*Cut up to .032" (ø0.80mm)



**YS-602**  
KI  
No.22602

\*Cut up to .045" (ø1.10mm)



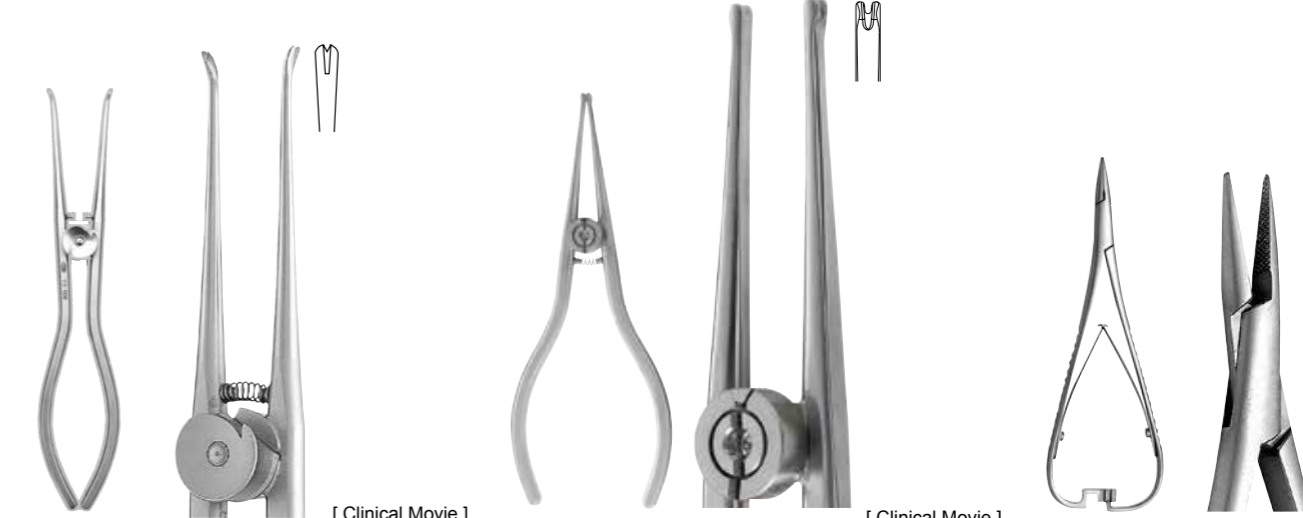
**YS-603**  
Standard  
No.22603

\*Cut up to .048" (ø1.20mm)

# Tying Pliers



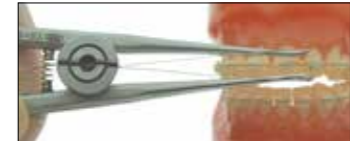
\*Tie ligature wire on the bracket.



**YS-506**  
No.22506  
\*Steiner Type.



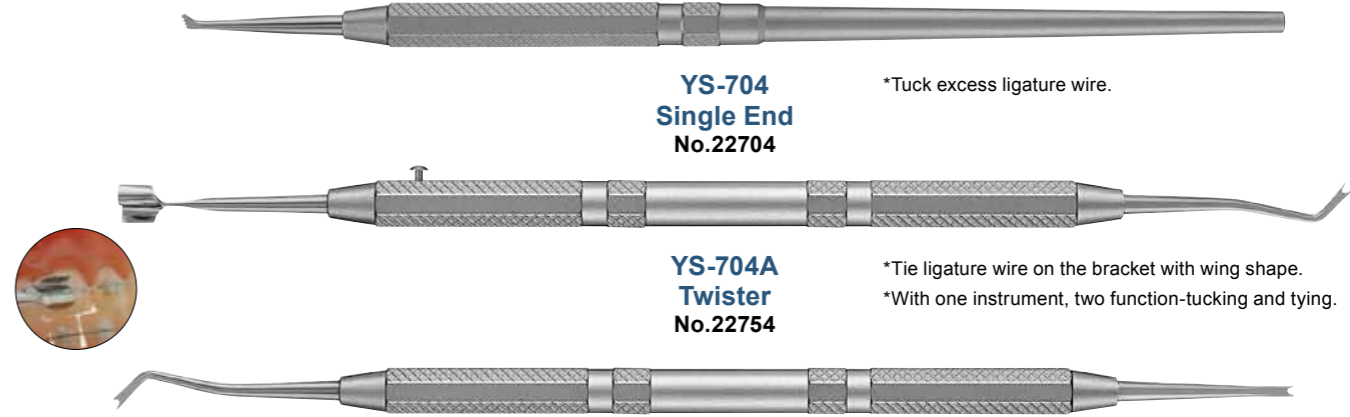
**YS-507**  
No.22507  
\*Coon Type.



**YS-508**  
No.22508

\*Used for applying both long and short type ligature wire.

# Ligature Director



**YS-704**  
Single End  
No.22704

\*Tuck excess ligature wire.

**YS-704A**  
Twister  
No.22754

\*Tie ligature wire on the bracket with wing shape.  
\*With one instrument, two function-tucking and tying.

**YS-704B**  
Double End  
No.22755

\*Tuck excess ligature wire.

# Arch Wire Director



No.27709



# Module Pliers



\*Put module on the bracket.  
\*With ultra thin tips, easy to insert into the mouth.



**Str.**  
**No.22509**



**Cvd.**  
**No.22510**

\*For Lingual



**with Groove Str.**  
**No.22511**



\*With groove, module can move easily and give power on bracket fairly.

# Pliers Stand



\*Convenient pliers stand made by high-class stainless steel for steriliation and storage of pliers / cutters.  
\*\*"S" and "L" size are available.



No.	Description	Size (mm)		
		a	b	c
27400	Pliers Stand S	112	64	80
27401	Pliers Stand L	154	124	140



\*Average pliers number.

**Mosquito Str. ST**  
**No.29101**



**Mosquito Cvd. ST**  
**No.29102**





# Band Seater



\*Set band by patient's own occlusal force.  
\*Tip can be replaced.



**YS-703**  
No.22703

# Bracket Tweezers



\*Hold firmly the bracket by groove at the tips.  
\*At the end of the handle with measure (3.5mm, 4.0mm, 4.5mm, 5.0mm) helps bracket height and angulation.

**No.22761**



# Band Pusher



\*Insert band.



**YS-701**  
No.22753

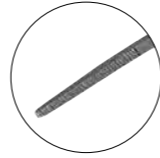


# Multi Use Tweezers Fine



\*\*"Multi" use for handling bracket, tube, lingual button and so on.  
\*Firm and stable hold without dropping off even used for tube thanks to its "exquisite" tip design.  
\*Designed slim tip not to get stuck with the space of hook part of tube.

**No.27409**



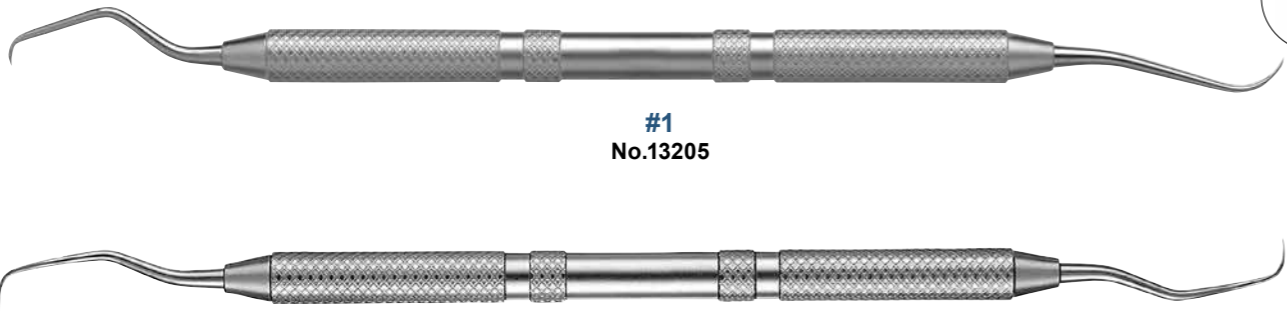
\*Serrated tip for stable hold.



# Surplus Cement Remover



\*Remove surplus bonding material smoothly.

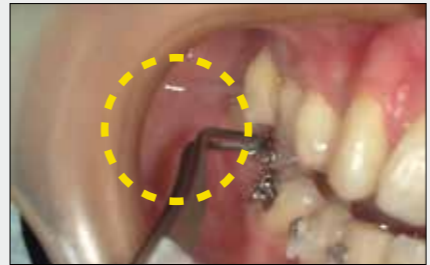


**#1**  
No.13205

**#2 for Posterior**  
No.13206



\*Designed angle for clear view.



\*Bonding tube on second molar.  
Designed tip angle not to contact retractor.

\*Compact design even for lingual treatment..



\*Able to use for holding and tying elastic tube.



# Articulator

-for Construction Bite-



YS-714  
No.22714



# Typodont Articulator



YS-802A  
No.22822



\*Product does not include wax form and teeth.

-Example of Practicing with the Typodont Practice Model-



1) Attach the ORT various Wax Form to the Typodont Ocluder by applying molten wax with an instrument.



2) Remove the jaws with the black base as pictured.



3) Dip the jaws into 55-60°C warm water.



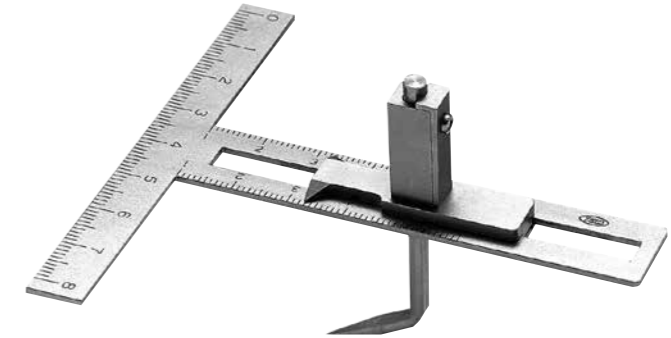
4) Lift the jaws from the warm water and dip into cool water. Observe the result.

# Model Measuring Device



Contents Main body, Chart (25 sheets)

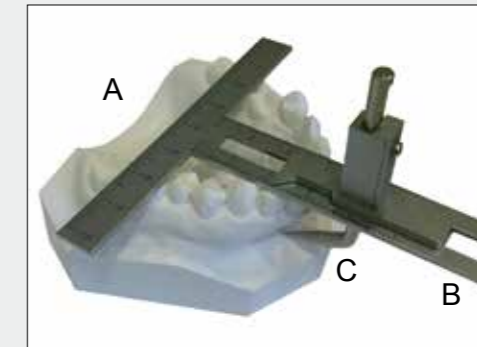
YS-34 with Chart  
No.22934



\*This measuring device is for the purpose of measuring following length/ Width below on a tooth model, constituting T shape ruler and (vertical, horizontal) indicator needle. The indicator needle designed to slide on its vertical surface.

\*This measuring device is designed to measure following (1),(2),(3).  
For the measurement of (4) please use separately sold Orthodontic Caliper as the direction mentioned below.

- (1) Length of dental arch
- (2) Width of dental arch
- (3) Length of BASAL ARCH
- (4) Width of BASAL ARCH



[Direction of how to use]

- A.Horizontal part
- B.Vertical part
- C.Indicator needle

Standard deviation table for width of dental crown, dental arch, BASAL ARCH is also available.

- 1) Width of dental arch  
With horizontal part A measure its distance between buccal sides of first premolar tooth.
- 2) Length of dental arch  
Fitting in its base line of horizontal part A to the point of first molar teeth in distal part. Then measure the distance to incisal edge of a central incisor with vertical part B.
- 3) Length of BASAL ARCH  
Setting horizontal part A as above picture indicates, slide the indicator needle C to fit in the bottom point of the root of a central incisor tooth.
- 4) Width of BASAL ARCH  
Measure the bottom point of the root of first premolar tooth with Orthodontic Calipers.



# Tension Gauge



\*Measure the force of coil spring and elastic.

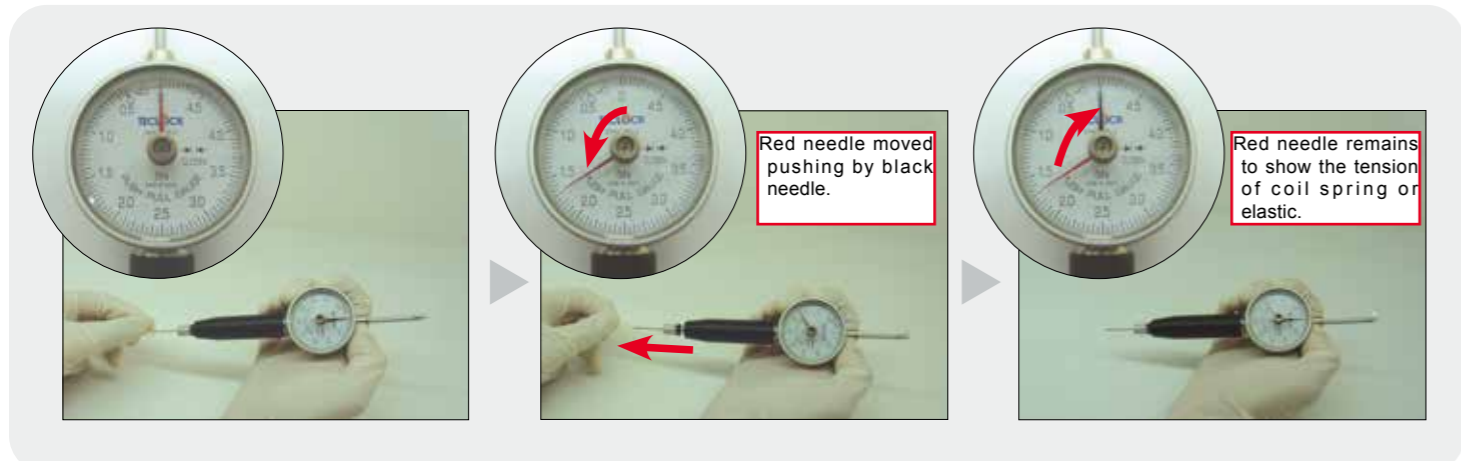


**YS-31 5N**  
No.22955

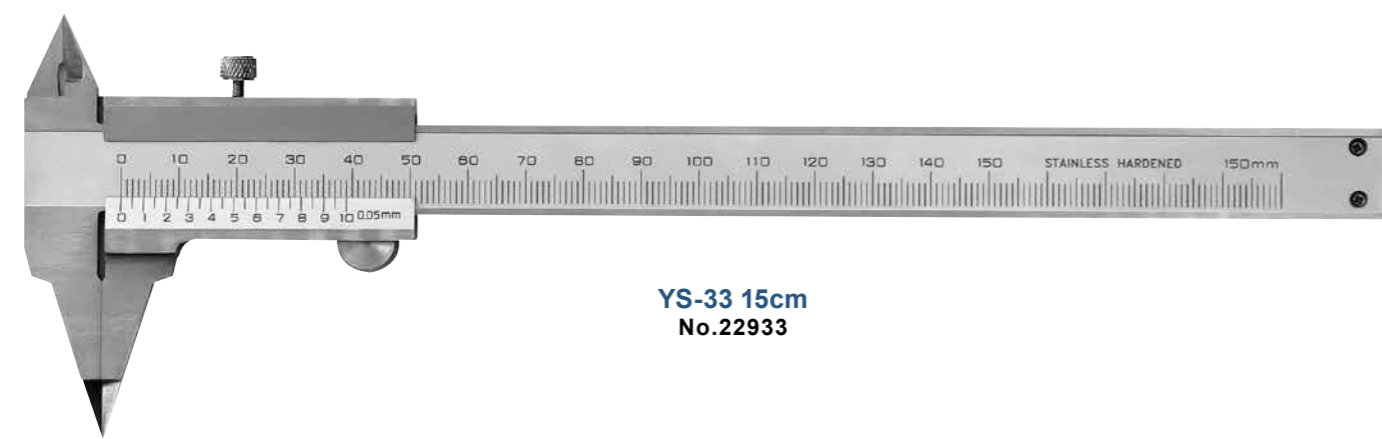


**YS-31D Dial (5N)**  
No.22930

\*1N = 100g



# Orthodontic Calipers



**YS-33 15cm**  
No.22933

# Boone Gauge



\*Check position of bracket on tooth.  
\*Measure bracket height 4.5mm, 4.0mm and 3.5mm.



**YS-39**  
No.22939

# Handy Torch

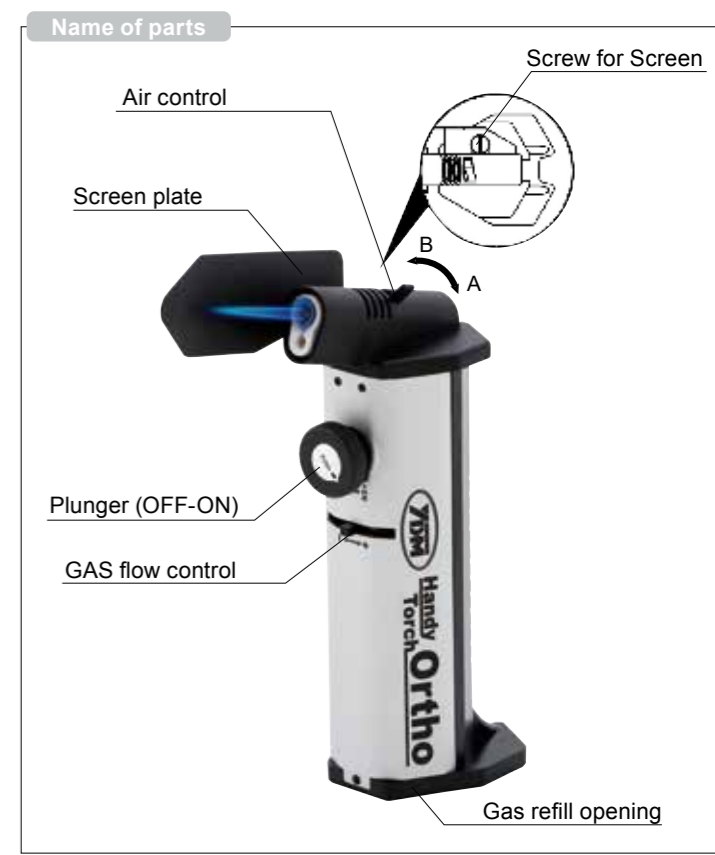


\*Sharp flame is suitable for delicate work.  
\*Gas is empty at the time of delivery.



**Ortho**  
No.27907

Size / W76.6xD54.5xH154mm



### Specifications

- \*Weight / 245g (with the screen board)
- \*Gas Volume / 15g
- \*Combustion Time / 80min.
- \*Flame Temperature / 1300°C (blue flame)







**DENTALVAREHUSET**  
*når kunnskap og kvalitet teller...*