



## The new generation STATIM<sup>®</sup>

The gentleness you know, a level  
of interactivity never seen before

Your Infection Control Specialist<sup>™</sup>

**SciCan**  
A Sanavis Group Company



## Now, there's a STATIM that's perfect for every practice.

Drawing on over 20 years of innovation, the leader in autoclave technology has created a complete line of STATIM Cassette Autoclaves – designed to meet the needs of every size of practice. The STATIM family comprises the most innovative autoclaves available today.

Employing an innovative sterilization process, SciCan has developed the STATIM family to address the full range of instrument sterilization applications – from hygienists to multi-doctor practices – providing each with a superior solution in sterilization.

## Doctors around the world rely on STATIM.

Healthcare practitioners in over 90 countries around the world rely on STATIM to protect their patients and staff from infection – with sterilized instruments in just minutes.

In 1989, SciCan transformed the industry, developing the world's first compact sterilization unit designed to meet the growing need for rapid sterilization. Today, the STATIM still boasts superior cycle times and processes for both wrapped and unwrapped cycles. In fact, the STATIM Cassette Autoclave® sterilizes up to 5 times faster than traditional 'chamber style' units.

Employing a proprietary Positive Pressure Pulse Displacement (PPPD) technology – using saturated steam to remove air and effectively sterilize instruments between patients – the STATIM Autoclave ensures clinicians always have an ample supply of instruments ready for use.

### STATIM's Speed

#### Reduces Instrument Investment

STATIM sterilizes instruments for immediate use in as little as 8 minutes, reducing the number required as instruments can be processed 'just in time' or between patients.

#### Increases Efficiency

Fast point-of-use sterilization makes turnaround a priority, increasing efficiency and virtually eliminates instrument bottlenecks.

#### Gentle on Instruments

Our state-of-the-art steam technology is gentle on both solid and hollow instruments.





## STAT/M technology defined – what makes STAT/M different?

### Immediate Steam Generation

Unlike conventional autoclaves that need to heat an entire reservoir of water, STAT/M uses only a small, specific amount of water required for each cycle. Water is introduced into a heating device referred to as a 'steam generator', rapidly heated and converted to steam in mere seconds.

### Air Removal

Using PPPD technology and our innovative steam injection process – air is automatically forced out of the sterilization chamber.

### Cassette System

The thin stainless steel walls of STAT/M's fully-removable cassette, (or sterilization chamber) allow for rapid heating and cooling of the chamber. As a result, STAT/M meets the conditions for sterilization and drying in a fraction of the time required by a conventional autoclave.

### Fully Satisfies EN13060 for Instrument Sterilization

STAT/M continues to meet all EN13060 requirements, powered by advanced microprocessor controlled cycles which deliver validated sterilization at speeds up to 5X faster than most conventional chambered autoclaves.



### Drying Technology

The STAT/M 2000 G4 and 5000 G4 have each been designed to provide you with a complete solution: rapid sterilization balanced by rapid drying. Introducing STAT/M Dri-Tec drying technology.



The STAT/M 2000 G4 uses convection heat to dry instruments by utilizing the remaining heat in the system after the sterilization phase. Heat is captured and released into the cassette, drying wrapped instrument loads in as little as 10 minutes.



The STAT/M 5000 G4 uses heat generated by the sterilization cycle which is 'absorbed' by unique drying plates located in the sterilization chamber. Heat is transferred from the drying plates directly to instruments resulting in accelerated, full load drying in as little as 15 minutes.

# Introducing the new generation STAT/M by SciCan.

## Fast

STAT/M's speed and dependability have made STAT/M the world's best-selling cassette autoclave. And its gentle technology has also made STAT/M the world's favourite cassette autoclave.

## Forward

The STAT/M G4 will offer you a level of interactivity never seen before. The STAT/M G4, through its LCD touch screen control and networking capability, has been designed to provide you with unprecedented ease of use and puts the user in total control.

## Touch

A large 3.5" high-resolution touchscreen offers a vivid display of messages, current cycle information and customizable colours all with extraordinary clarity. Fully adjustable contrast levels let you optimize the screen to the lighting in your steri-centre.

## Connect

Through your networked portal, you can view not only your STAT/M's current operations in real time, you can also access cycle history, printing and verification information, and also sterilization records. Capable of sending emails with cycle information errors directly to your dealer, your STAT/M G4 will let qualified technicians know when service is imminent.

## Protect

Patient safety relies on attention to detail. The STAT/M G4 supports verifiable processes that are PIN protected with user-defined IDs so that staff members can be required to authorize a cycle. This encourages extra attention to process and creates a safer environment for both staff and patients.

## Collect

An undocumented sterilization cycle might as well not have been performed. With each cycle, information must be stored to protect your office and your patients. The integrated DataLogger stores all cycle information for the lifetime of the unit, which is accessible through multiple channels such as: a USB port for manual retrieval; an Ethernet connection for web based archiving or desktop printing; or a RS232 port for an external printer option.\*

\* Under normal storage conditions, a thermal document will remain legible for a minimum of 5 years. Normal storage conditions include avoiding direct sunlight, filing in office temperatures below 25 degrees Celcius and moderate humidity (45-65% relative humidity).



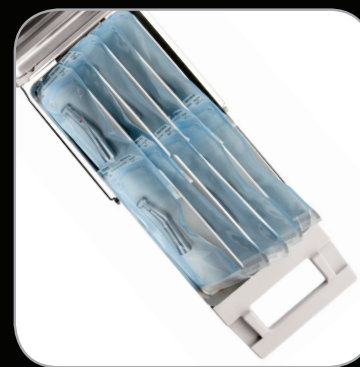
A large touch screen offers communication between the unit and the user, allowing for easy operation, and tutorial viewing.



Wrapped dental handpieces in the STAT/M 2000 G4 cassette



G4 collects all cycle data and service history, protecting your office and patients.



Wrapped dental handpieces in the STAT/M 5000 G4 cassette



Connect to anyone from anywhere... your STAT/M is now accessible online.



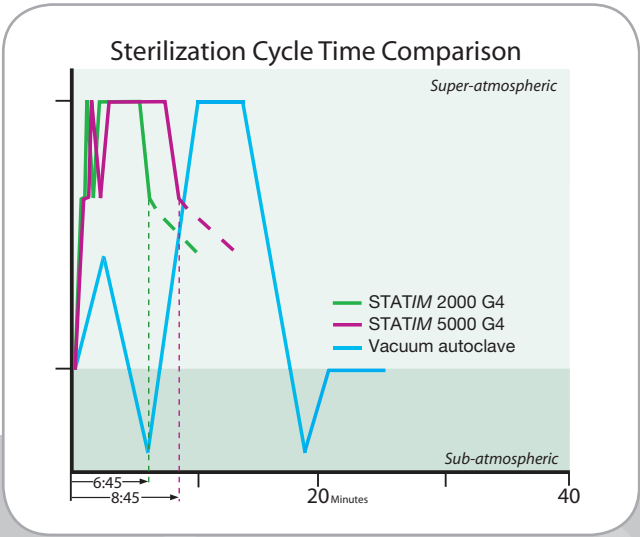
Wrapped phaco handpiece in the STAT/M 5000 G4 cassette



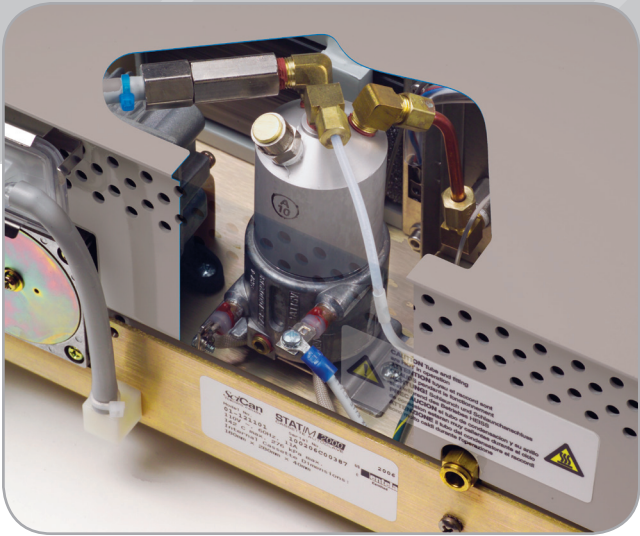
# How STAT/M Works



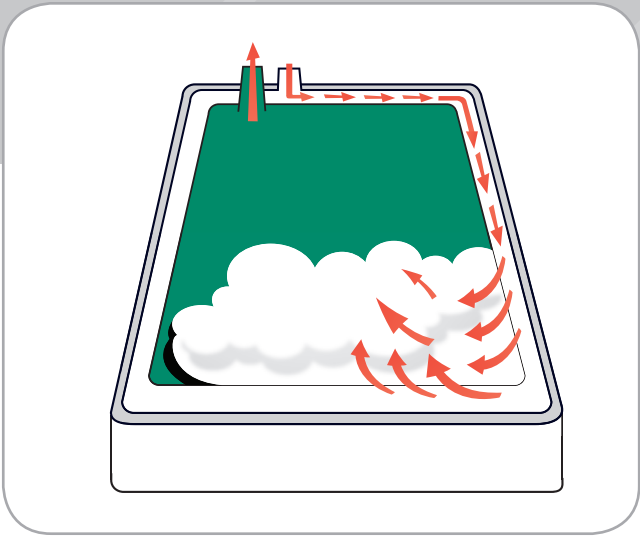
Ease of Operation



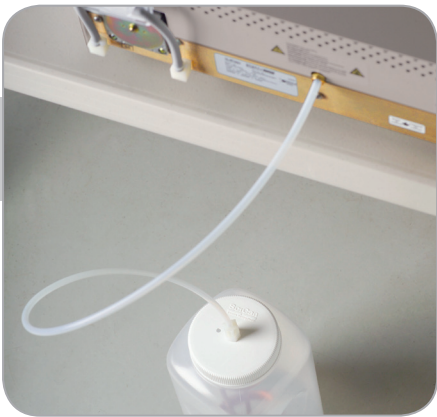
Ultra Fast Condition Phase



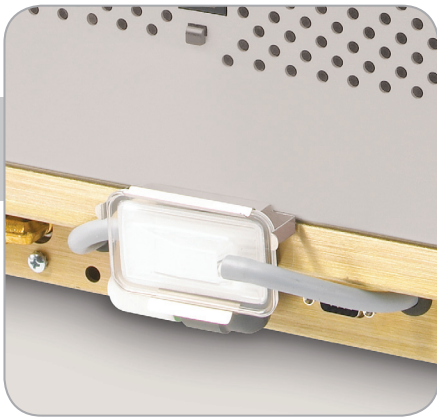
Small Steam Generator for Instant Steam



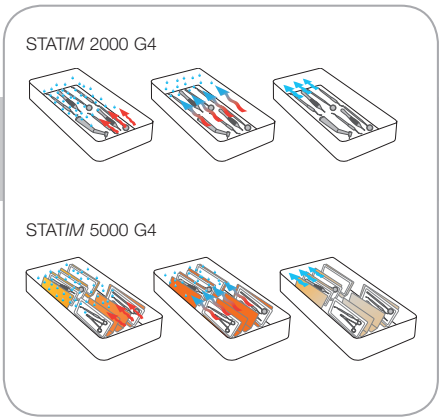
STAT/M 2000 G4/5000 G4 Steam Injection



Single Use Water System



Biological Filter



Dri-Tec Drying Technology

# Setting new standards

The European Standard EN13060 defines and approves three basic classifications of small steam steriliser cycles.

Type of cycle	Description of approved use by EN13060
S	The sterilisation of products as specified by the manufacturer of the steriliser including non wrapped solid products and at least one of the following: porous products, small porous items, narrow lumen, simple hollow item, single wrapped products, multiple-layer wrapped products
N	The sterilisation of non wrapped solid products
B	The sterilisation of all wrapped or non-wrapped, solid, Narrow Lumen and porous products as represented by the test loads in this standard

## The certainty of validation

The STAT/M G4 cassette autoclave is a bespoke steriliser in that it is validated microbiologically by independent research institutes and tested for specific instruments. These include all major brands of handpieces.

Now you can also obtain a routine check of STAT/M's sterilisation cycle with a specifically designed STAT/M Process Challenge Device (PCD). As per Clause 7.1.3 within EN 13060:2014 (which states that if some tests are not applicable for physical reasons for particular sterilizer concepts, the manufacturer can use alternative procedures and/or specific test devices to demonstrate compliance with the standard), SciCan designed the STAT/M PCD to demonstrate that the sterilization parameters required and validated during microbiological testing have indeed been achieved.

With a routine check using your STAT/M PCD, you can be certain that STAT/M is meeting the challenge of ensuring that yourself, your staff and your patients are protected against cross-infection from contaminated instruments.

STAT/M also documents its own successful cycle. A computerized microprocessor aborts the cycle if any of the parameters of temperature, pressure or time are not achieved. You can be certain that by following the simple keypad instructions the fully automatic operation will result in sterilisation of all your solid, hollow, wrapped or unwrapped instruments.

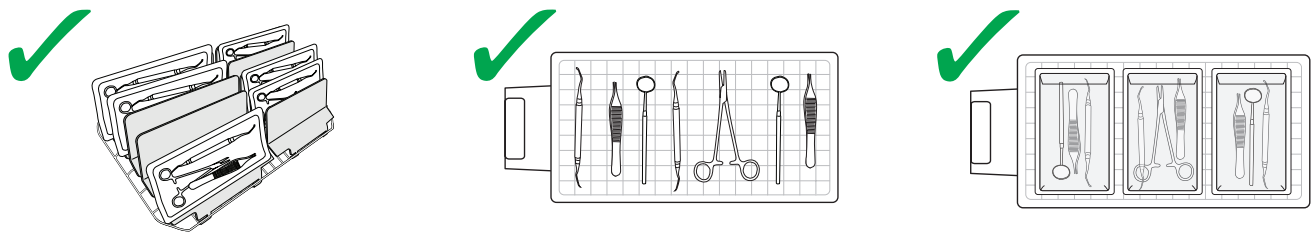
Validated handpieces	
STAT/S	High Speeds
STAT/S	Low Speeds
Bien-Air	Bora L
Kavo	Gentle Power 25 LPA
KaVo	Gentleforce 7000C
KaVo	Intramatic LUX3, 20 LH
KaVo	Super-Torque LUX/640 B
NSK	ATL118040
NSK	PanaAir
NSK	Ti-Max
Midwest	Tradition
Sirona	T1 Classic, S 40 L
Sirona	T1 Control, TC3
STAR	430 SWL
W&H	TA-98LC*
W&H	Trend HS, TC-95RM
W&H	Trend LS, WD-56
W&H	WA-99 LT*
W&H	WS-75*

\* Wrapped cycle

The above instruments were tested by third party agencies. These tests indicate that semi-critical and critical instruments, including dental handpieces, can be sterilised wrapped or unwrapped unless indicated otherwise above.

## Loading Instruments

Arrange instruments on the rack spreading them out as evenly as possible.







Reference	Medical Device Directive
EN 13060: 2014	Small Steam Sterilisers
EN 61010-1: 2010	Safety requirements Part 1: General requirements
EN 61010-2-040: 2015	Safety requirements Part 2-040: for steam autoclaves
EN 61326-1: 2013	EMC requirements

Specifications for 2000G4 and 5000G4		STAT/M 2000G4	STAT/M 5000G4
Machine Dimensions:	Length:	48.5 cm	55 cm
	Width:	41.5 cm	41.5 cm
	Height:	15 cm	19 cm
Cassette Size (External):	Length:	41 cm	49.5 cm
	Width:	19.5 cm	19.5 cm
	Height:	4 cm	8 cm
Cassette Size (Internal):	Length:	28 cm	38 cm
	Width:	18 cm	18 cm
	Height:	3.5 cm	7.5 cm
Sterilisation Chamber Volume:		1.8 l	5.1 l
Reservoir Volume:		4.0 l	4.0 l
Weight (Without water):		21 Kg	33 Kg
Clearance required:	Top:	50 mm	50 mm
	Sides:	50 mm	50 mm
	Back:	50 mm	50 mm
Clearance required to remove cassette:		48 cm	57 cm
Minimum charge in the water reservoir:		550 ml	550 ml
PRV value (pressure relief valve):		3 BAR	3 BAR
Electrical Rating:		220-240 V, 50/60Hz, 6A	220 - 240 V, 50/60 Hz, 6A
Current:		AC	AC
Protection Class:		II	
Protection:		Covered	Covered
Ambient Operating Temperature:		5°C - 40°C	5°C - 40°C
Sound levels:	Mean - 56 dB		Mean - 56 dB
	Peak - 65 dB		Peak - 65 dB
Relative Humidity:		80% Max.	80% Max.
Max. Altitude:		0 - 2000 m	0 - 2000 m
Max. Water Consumption		268 mL/cycle	564 mL/cycle
Recommended water quality		<5 ppm	<5 ppm
Conductivity		<10 µs	<10 µs
Total heat transmitted		1,047,000 Joules max	1,645,000 Joules max
Weight load with reservoir full and maximum cassette load		30,571 N/m <sup>2</sup>	51,291 N/m <sup>2</sup>

## Compare the results:

The STATIM 2000G4 and 5000G4 cassette autoclaves deliver dramatic improvements in process efficiency through shorter cycle times.

Button	Cycle name	Load (max)	Sterilisation temperature	Sterilisation time (minutes)	Cycle time* (mm:ss)	
					Warm start (max. load)	Cold start (max. load)
	Solid Unwrapped (N)	2000: 1.0kg 5000: 1.5kg	134°C	3.5 min	2000: 6:45 5000: 8:45	2000: 9:15 5000: 13:15
	Hollow Unwrapped (S)		134°C	3.5 min	2000: 8:05 5000: 10:50	2000: 11:45 5000: 17:30
	Hollow Unwrapped (S)		134°C	18 min	2000: 22:35 5000: 25:20	2000: 26:15 5000: 32:00
	Hollow Wrapped (S)**		134°C	3.5 min	2000: 10:40 5000: 15:30	2000: 15:35 5000: 24:00
	Hollow Wrapped (S)		134°C	18 min	2000: 25:10 5000: 30:00	2000: 30:05 5000: 38:30
	Rubber/Plastic (S)	0.4kg	121°C	15 min	2000: 18:40 5000: 20:20	2000: 20:15 5000: 22:50
	Rubber/Plastic (S)		121°C	30 min	2000: 33:40 5000: 35:20	2000: 35:15 5000: 37:50
	Air Drying Only	Not a sterilisation cycle				

\*Drying not included \*\*Cycle for routine check (STATIM PCD) test

Manufactured by:

**SciCan Ltd.**

1440 Don Mills Rd.,  
Toronto, Ontario, M3B 3P9  
Canada

Phone (416) 445-1600 • Fax (416) 445-2727

Toll Free 1-800-667-7733 • www.scican.com



**EU Representative:**

**SciCan GmbH**

Wangener Strasse 78  
88299 Leutkirch GERMANY

Tel.: +49 (0)7561 98343 - 0

Fax: +49 (0)7561 98343 - 699

**FOLLOW US!**



SciCan



@SciCan



SciCanTV



**SWITZERLAND:** SciCan Medtech AG, Alpenstrasse 16, 6300 ZUG, Switzerland • Tel: +41 (0) 41 727 7027 Fax: +41 (0) 41 727 7029

**USA:** SciCan, Inc. 701 Technology Drive, Canonsburg PA, 15317 • Phone (724) 820-1600 Fax (724) 820-1479 Toll free 1-800 572-1211 uscustomerservice@scican.com

Your Infection Control Specialist™

**SciCan**  
A Sanavis Group Company