

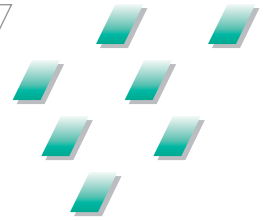
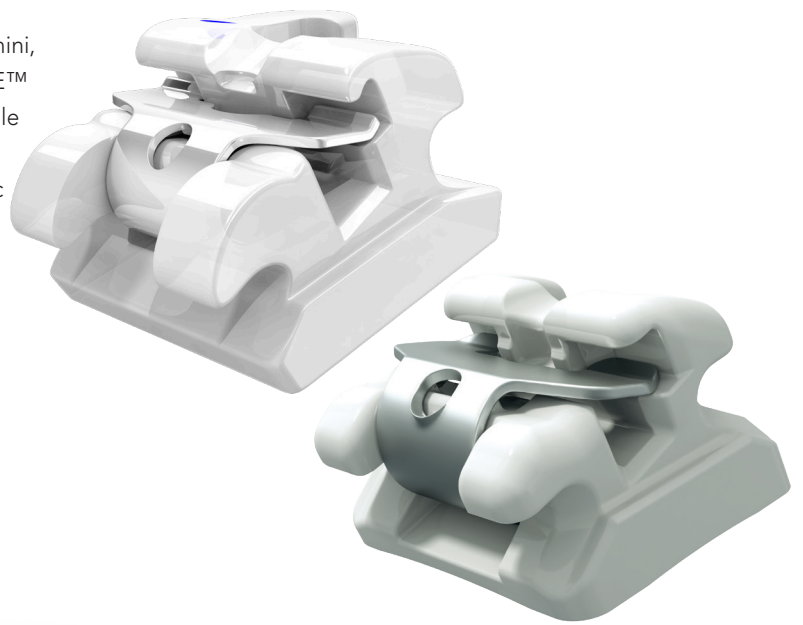
A Concentrated Experience

GC Orthodontics has been a distributor of self-ligating brackets from Japan-based TOMY Inc. since 2012.

The latest addition to the product line is EXPERIENCE™ C mini, offering all the advantages of its predecessor, EXPERIENCE™ C, but in a remarkably smaller size providing an incomparable aesthetic solution to patients.

EXPERIENCE™ C mini is manufactured by injection (Ceramic Injection Molded) from innovative ceramic materials (micro-particles). This new technology enables the development of smaller brackets, with a high resistance to impact and enhanced patient comfort.

EXPERIENCE™ C mini features a CNC milled slot for perfect torque expression and improved archwire engagement, along with a Rhodium-treated interactive clip for enhanced aesthetics. The chamfered slot facilitates archwire insertion, helping to eliminate archwire binding and notching. In addition, EXPERIENCE™ C mini's anatomical mechanical base follows the contours of the tooth to ensure a secure bond.



Self Ligation Features

- Increased patient comfort
- Reduced chair time
- Fewer office visits necessary
- Shortened treatment time
- Improved patient hygiene
- Pleasing aesthetics

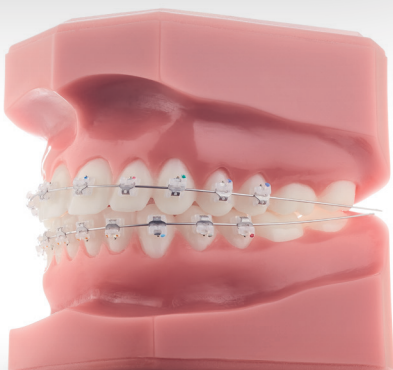
SL Product

Hi Aesthetic

EXPERIENCE™

mini ceramic

Mini Self-Ligating Ceramic Bracket



Passive



Interactive



Active



Experts in Orthodontics

GC Orthodontics Europe GmbH

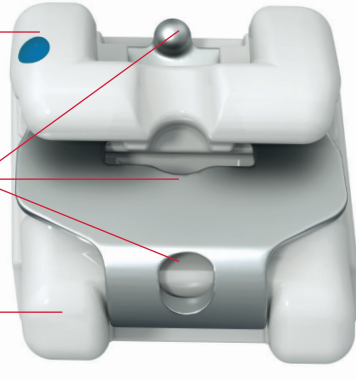
www.gcorthodontics.eu

EXPERIENCE mini ceramic

Smooth swept tie-wings
engineered to minimize occlusal interference

Multiple clip opening methods
for easy clip opening without clip deformation

Ceramic injection molding bracket
for uniformity, strength & precision



CNC Milled slot



Triple chamfered slot
for easy wire engagement and to eliminate arch wire binding & notching

Torque in Base



Compound contoured pad
ensures an anatomically correct fit for each tooth

Mechanical lock
for maximum bond strength & the ability to reposition, if necessary. ID marking

Bracket & Wire Combination

Pair EXPERIENCE with our Initalloy, Bio-Active, and Bio-Edge thermal NiTi arch wires, for increased patient comfort and treatment efficiencies. Rhodium-coated arch wires also available for a completely discrete orthodontic bracket system.



The EXPERIENCE collection is manufactured by TOMY Inc., a leading manufacturer of self-ligating brackets since the year 2000. EXPERIENCE is available in both a standard and mini size; metal, rhodium, and ceramic material; and a variety of prescription options.

Avantages du Brackets EXPERIENCE mini ceramic

This ceramic self-ligating twin bracket delivers outstanding aesthetics and performance. The bracket features a rhodium coated clip that blends into the ceramic body of the bracket creating a beautiful appearance. The base is a 100% mechanical lock ensuring both reliable bond strength and easy debonding.

99-11ET-1300 · Rev00-05/2019



Since 1921
Towards Century of Health

GC Orthodontics Europe GmbH
Harkortstraße 2 · 58339 Breckerfeld · Germany
Tel +49.2338.801.888 · info.gc.germany@gc.dental