

elexxion **pico**

The bare essentials:

## elexxion pico – for beginners

A dental laser “Made in Germany”  
that combines mobility and professionalism.

Diode	5 Watt Max. application power	20.000 pulse rate	808 nm Diode
-------	--	----------------------	-----------------



**DPL**  
TECHNOLOGY INSIDE

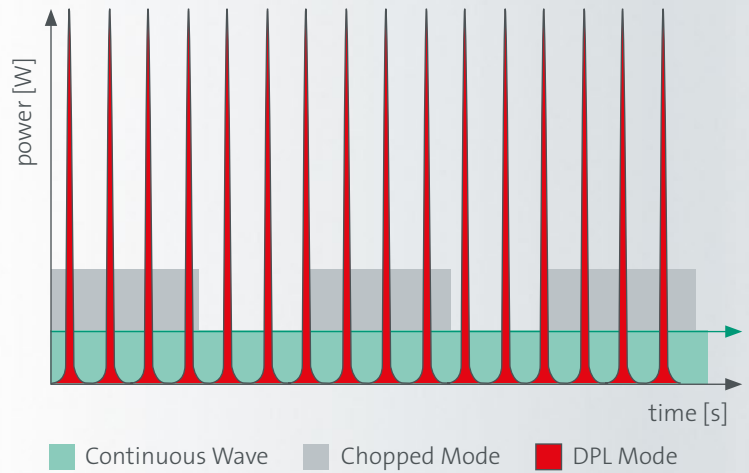
Image subject to model

elexxion  
dental laser

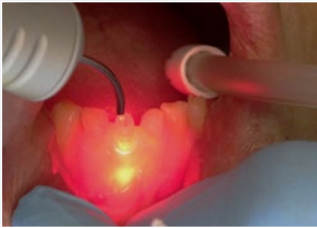
## DPL\* makes the elexxion laser unique

- Highest pulse power variability: in pulse energy, pulse width and pulse duration
- Highest efficiency
- No bleeding
- Little to no pain
- Fast, clearly laid-out work
- Absolute safety with the applications
- Control of energy
- No carbonisation

\* DP = digital pulsed, diode pumped, duration power



### Decontamination of root canals and dentin tubules

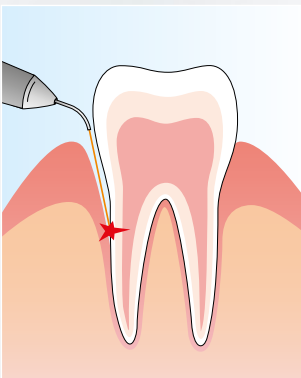


### Pocket bacterial reduction



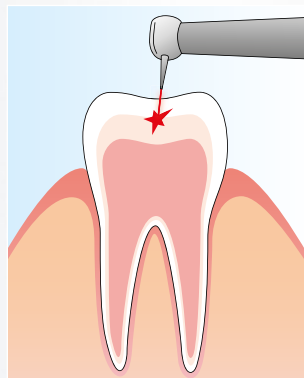
During surgery

Immediately after surgery



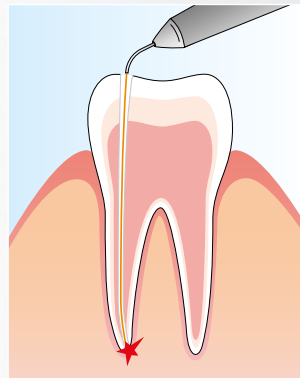
#### Periodontology

Pocket bacterial reduction, Removal of granulation tissue



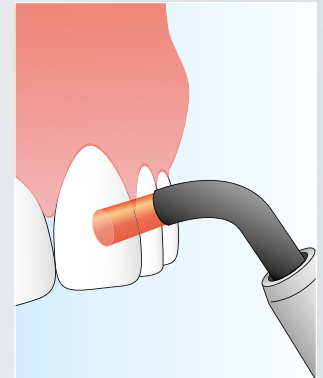
#### Therapy laser

Pain (general), Aphthae, Herpes, Wound treatment, Root irritation suppression, Temporomandibular joint disorders



#### Endodontics

Canal bacterial reduction, Tubuli bacterial reduction, Gangrene treatment



#### Laser bleaching

Flash activation of  $O_2$  radicals, Optimised treatment time, Gentle on the teet, Better results

#### Surgery

No surgery,  
We recommend the  
**elexxion nano**  
**elexxion claros**  
**elexxion delos**



## Small but well-made ...

This powerful laser has been stripped down to the essentials.

elexxion AG, the market leader in dental lasers made in Germany, offers all dentists an uncomplicated introduction of a recognised form of treatment into their practice. So incredibly simple, yet professional – you can navigate your way through a wealth of scientifically recognised treatment options.

(Additional information is available at: [www.elexxion.com/download-en](http://www.elexxion.com/download-en))

It is well known that high-quality dental lasers enable you to achieve results more quickly and to work more effectively. This makes you happy, and your patients will thank you

# The elexxion **pico**: portability and competence combined

## Essential: **mobility**

You work completely independent of the mains because the **elexxion pico** is mobile and can be used in any treatment room.

## Practical: **Pre-programmed**

With a simple touch of the **elexxion pico** touchscreen interface, you select programs and begin treatment immediately. The **elexxion pico** is ideal for all practitioners who value uncomplicated, fast work.

## **Ergoflex plus** handpiece with 360° rotation

The ergonomically shaped handpiece is sterilisable and enables safe, controlled operation. Ergoflex plus means a single handpiece for all applications, with application fibres of four different strengths and individually adjustable lengths. With its sterilisable and re-usable fibres, the complete application system corresponds to current **RKI guidelines**.

## **odobleach: for a gleaming white smile**

Bleaching is a service that more and more patients are requesting – and, as a private service, one for which they pay extra, too. With the **elexxion pico** bleaching becomes laser power bleaching. This means: rapid, permanent success and happy patients.

## The right wavelength:

The 808 nm wavelength has been proven in hundreds of clinical studies, making it the most rigorously scientifically tested wavelength in the dental field. Thanks to the established scientific basis, numerous verified applications are available. A selection of scientific articles and studies is available to download at: [www.elexxion.com/download-en](http://www.elexxion.com/download-en)

## Plus: **more than 25 biomodulation indications**

In addition, the **elexxion nano** offers more than 25 scientifically verified indications for biomodulation, such as:

- Aphthae, Post-extraction pain, Herpes labialis, Temporomandibular joint disorders, Suppress gag reflex, and many more

The biomodulation function expands the range of potential applications and creates additional opportunities to increase revenues because this function can also be used by practice staff.



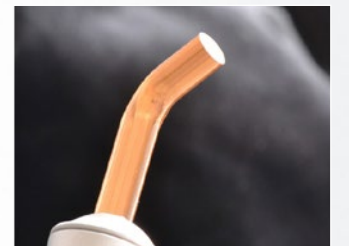
Initial situation

Status after 9 days and 3 treatments

- |  |   |  |
|--|---|--|
| <ul style="list-style-type: none"> <li>• Abscess ripening</li> <li>• Metal allergies</li> <li>• Aphthae</li> <li>• Decubitus</li> <li>• Dentitio difficilis</li> <li>• Post-extraction pain</li> <li>• Granulomas</li> <li>• Haematoma</li> <li>• Herpes labialis</li> </ul> | <ul style="list-style-type: none"> <li>• Temporomandibular joint disorders</li> <li>• Relieve lockjaw</li> <li>• Jaw osteitis</li> <li>• Smoothing of scars</li> <li>• Neuralgiform pain</li> <li>• General pain</li> <li>• Oedema</li> <li>• Periodontosis, initial</li> <li>• Periodontitis, initial</li> </ul> | <ul style="list-style-type: none"> <li>• Pulp capping</li> <li>• Pulpitis, initial</li> <li>• Acid trauma</li> <li>• Abrasion trauma</li> <li>• Sinusitis</li> <li>• Stomatitis</li> <li>• Wound healing</li> <li>• Suppress gag reflex</li> <li>• Root end resection wound treatment</li> </ul> |
|--|---|--|

As an option, elexxion offers the **DP handpiece\*** and the new book "Atlas of Laser Therapy" of the Professors Alberico and Stefano Benedicenti.

\* DP= duration power



## Photodynamic therapy with **perio green®** **Please delegate**

**perio green®** is the next generation of therapy for periodontitis and peri-implantitis. It is extremely light-sensitive and attaches to plasma proteins only. This medical product becomes effective only after activation with an 808 nm laser. The localised, pain-free increase in temperature kills the stained bacteria. (Additional information: [www.periogreen.com](http://www.periogreen.com))



## Credits: with laser knowledge

We also offer the legally-mandated training for laser safety officer online as an eLearning tool in German. In addition, we offer various application training classes to build your laser knowledge.



[www.elexxion.com/calender-of-events](http://www.elexxion.com/calender-of-events)

We begin training with a user report from an experienced laser specialist dealing with indications, clinical benefits, and efficient integration of laser therapy into the private practice workflow. The training continues with live surgery and follow-up hands-on training under the direction of an experienced specialist. The seminar provides continuing education credits.



### Technical data:

Class 4 dental laser  
Wavelength: 808 nm +/-10 nm  
Max. application power: 5W at peak  
Pulse rate: CW to max. 20.000 Hz  
Pulse duration: 26  $\mu$ s / CW  
Target beam: red (650 nm +/- 5 nm < 1mW)  
Dimensions: H 12 cm, W 11,5 cm, D 3,5 cm  
Weight: 650 g

CE0086